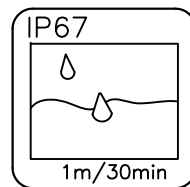
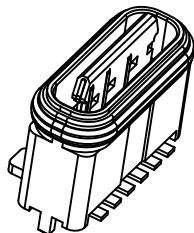
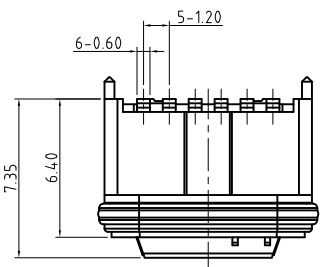
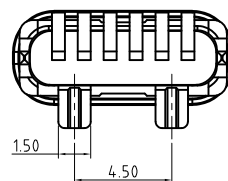
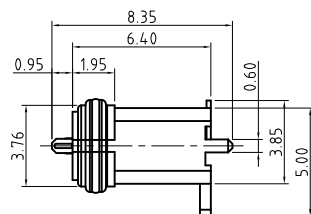
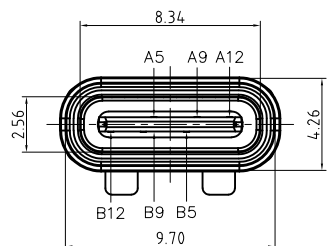


REV.	DESCRIPTION	DATE
A	RELEASE	Jan 01, 2020



SPECIFICATIONS:

- ELECTRICAL CHARACTERISTICS:
 - RATING: 3A;
 - CONTACT RESISTANCE: 30 mΩ MAX.(INITIAL);
 - DIELECTRIC WITHSTANDING: 100V AC MIN.;
 - INSULATION RESISTANCE: 100MΩ MIN.;
- DURABILITY: 5,000 CYCLES MIN.;
- INSERTION FORCE: 5-20N;
- EXTRACTION FORCE: 6-20N;
- WATER PROOFNESS: THIS PRODUCT IS BASED ON IPX7.
- PLUG INTERFACE DIMENSIONS COMFORM TO USB2.0 SPEC.
- PACKAGING: TAPE & REEL.



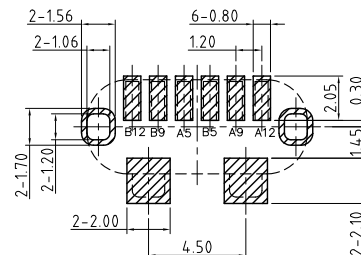
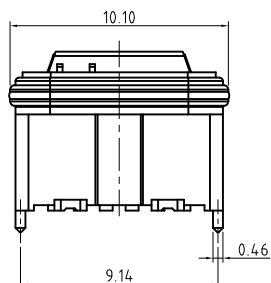
3	Shell	1	Ni Plating	
2	Contact	6	Phosphor bronze Au/Ni Plating T=0.20mm	
1	Housing	1	PA10T (G.F30%)	
ITEM	PART NAME	Q'TY	FINISH	NOTE

PART NUMBER INFORMATION :

239F806-XN4W1S-X

SERIES CODE | SMT 180° | FEMALE SINGLE TYPE | TYPE C | NUMBER OF POSITIONS

R:RoHS | H:HALOGEN FREE | FOLLOW NUMBER | BOARD TYPE | NICKEL PLATED | PLATING SEE TABLE

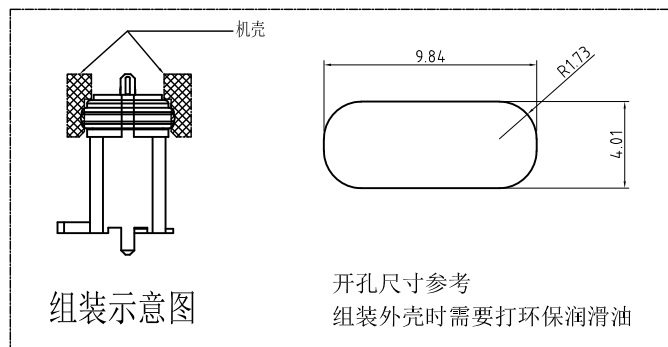


RECOMMEND PCB LAYOUT

TOLERANCE: ±0.05

TOP VIEW

A5	CC1	B12	GND
A9	VBUS	B9	VBUS
A12	GND	B5	CC2
PIN	SIGNAL NAME	PIN	SIGNAL NAME



DESCRIPTION OF PLATING ON TERMINALS			
NO.	EXPLAIN	NO.	EXPLAIN
0	GOLD FLASH	3	GOLD 15u"
1	GOLD 5u"	4	GOLD 20u"
2	GOLD 10u"	6	GOLD 30u"

TOLERANCE .0=±0.30 .00=±0.10 .000=±0.05 ANG.=±3°	DRAWER <i>Morris</i>	INMO 东莞市英墨电子有限公司 INMO Electronics Co.,Ltd
CHECK	NAME TYPE C 6PIN 立贴 IPX7	
APP'D	PRODUCT SPEC. —	DRAW NO. R239F806-XN4W1S-X
UNITS : mm	SCALE NONE	SIZE A4
SHEET 1 OF 1	REV. A	